

Mobile muscle for heavy lifting

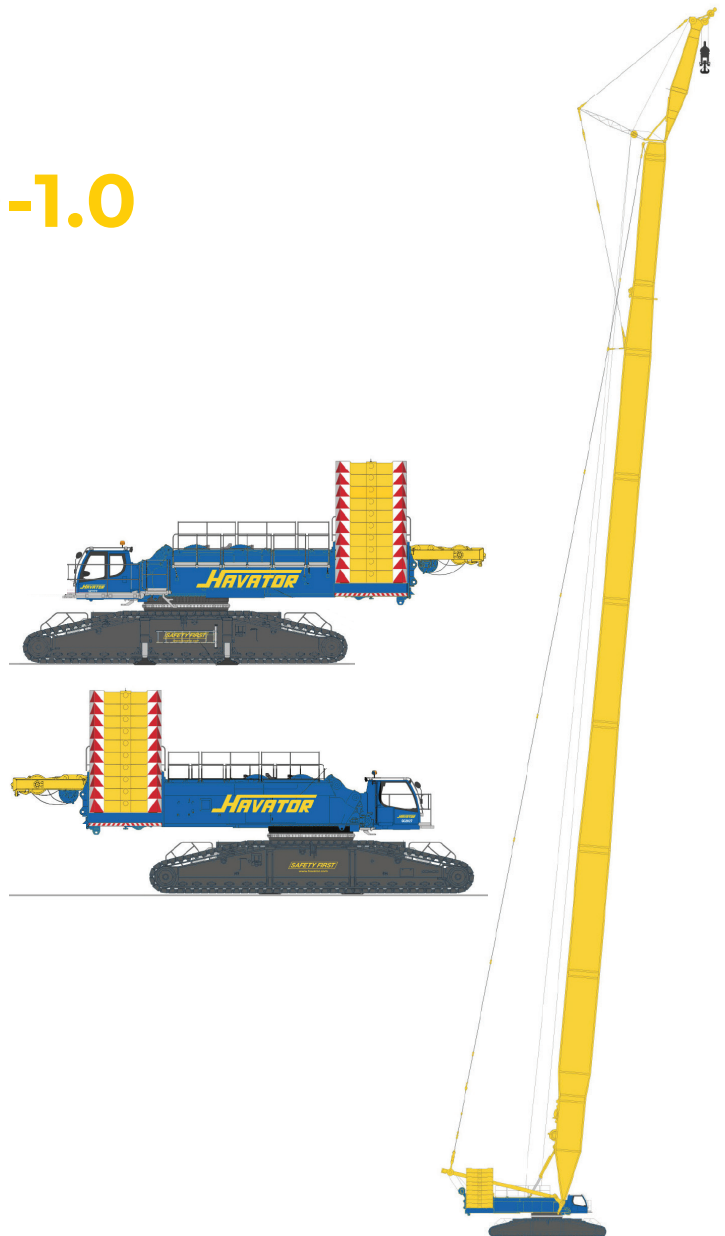
Liebherr LR 1700-1.0

The Liebherr LR 1700-1.0 is a lattice-boom crawler crane with a maximum lifting height of 196 meters. Lifting up to 700 tons, this giant can also move with its load and is therefore a very versatile lifting device. Thanks to its comprehensive boom configuration options, it is excellently suitable e.g. for industrial lifting and new wind power installation.

In terms of physical size, the Liebherr LR 1700-1.0 crane is smaller than, for example, the LR 1750, which allows for more cost-effective transfers to lifting sites. The crane has a modern derrick system, V-Frame, VarioTray and M-Wagon, with which counterweights can be moved, and the amount and radius of the additional counterweights easily changed, even during the lift. In addition, the crane has its own lifting table that takes wind speeds into account, so working is safe even in varying conditions.

The crane can be built with a main boom of up to 165 meters, or with 102 meters of main boom and 96 meters of folding jib. In wind power installations, the maximum configuration is 165 m + 18 m.

The crane is HVO-ready, so the crane's carbon dioxide emissions are up to 90 % lower than when using diesel. In addition, the crane uses bio-oil in its hydraulics.



Technical information

Make & model	Liebherr LR 1700-1.0
Lifting capacity	700 t
Boom	Lattice boom, with fixed and luffing jib options
Maximum lifting height	196 m
Max. radius	160 m
Engine emission class	Stage V
Crawler track width	2 m

Contacts

Matti Ruuska
Sales manager, Projects
(Industrial and infrastructure)
matti.ruuska@havator.com
+358 50 513 0123

Matti Simola
Project manager, Projects (Windpower)
matti.simola@havator.com
+358 50 395 5540

How can we serve you?

Contact us for a lifting solution that best accommodates your needs.